

DIGITAL TWIN:

GO VIRTUAL WITH YOUR EXHIBITION STAND

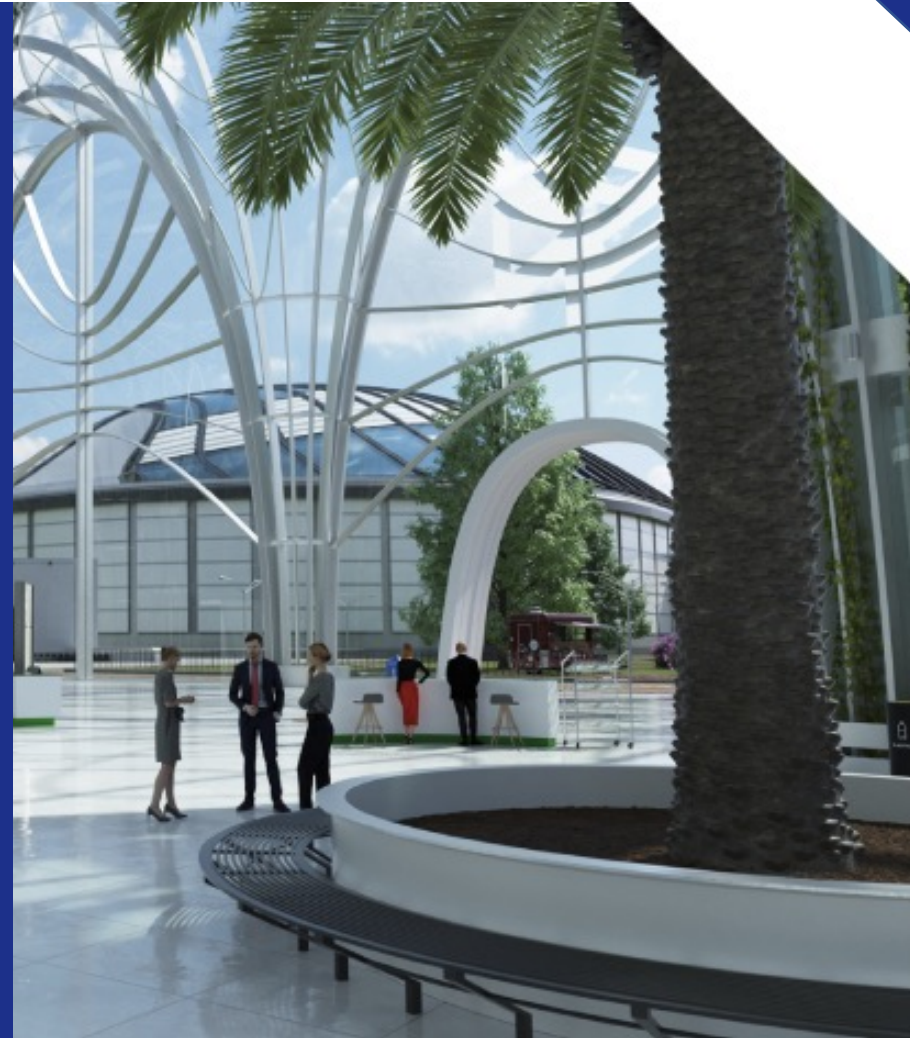
IMMERSIVE. CONNECTING WITH YOUR AUDIENCE

Our Expertise

Hosted on the V-Ex Platform, you can manage visitor registration, live stats and user analysis, combined with a simple Content Management System (CMS) to keep your digital twin up-to-date throughout the year.

For over a decade, V-Ex has developed virtual events and exhibitions for a diverse clientele, producing everything from interactive power stations to multi-day virtual conferences.

We offer a fully scalable service to convert your physical exhibition stands or venues into photorealistic digital twins.



Digital Twin

Why your exhibition stand needs a digital twin:

- Show off your carefully designed stand 365 days a year, 24/7
- Improve your diversity and global footfall to your stand
- Analyse visitor traffic on your stand – discover your most popular content
- Start conversations with visitors you may have missed at the live show
- Enhance the customer journey from the initial lead to following-up online in the same space you met.
- Familiarise potential visitors with your stand before a live show

Mitsubishi Electric:
66.5m² Double Decker
First displayed at Drives and
Controls exhibition (UK)



Digital Twin:
14k individual visits
125 different countries
59 product info points

Digital Twin

Why convert your showroom into a digital twin:

- Lets your global customer base experience the best sales experience you have to offer
- Cultural updates and translated content makes the experience personal to all regions
- Integrate product displays and application demonstrations that aren't possible in your physical space
- Create your own virtual venue by hosting live broadcasts and networking sessions for staff, suppliers and customers

Burkert Systemhaus:
2,000+ m² application centre
located in Ingelfingen (DE)

Digital Twin:
1,329 registered visitors
17 languages available
142 product info points



Custom Design

Not all twins are identical....

Our team of graphic designers and CGI artists are available to add a touch of creativity to your virtual project.

Whether you want to add a few creative flourishes to your real world design, or go back to the drawing board and re-design from the ground up, we're here to help.

We can build anything you can imagine, without a Health & Safety manual or a physics book in site!

Wavn Conference:
Dedicated exhibition space
Auditorium and breakout room
Live networking space



Travis Perkins Exhibition:
75 exhibition stands
3 days of live broadcasts
1,500 delegates accommodated

Year

Round

The extended benefits of a digital twin:

- Extend your opportunity to engage with visitors
- Market your digital twin to registered visitors who are unable to travel to meet you
- Re-use your digital twin to host product launches, training and sales activities
- Provides your sales and marketing collateral a new lease of life
- Offer a hybrid experience by hosting your digital twin via touchscreen displays

Sulzer:
36m² custom build first
displayed at ENLIT (SA)
Hybrid solution featuring
touchscreen 'digital twin'



Sales & Marketing

Your digital twin as a marketing tool:

- Use your digital twin to track footfall, analyse visitor traffic and pass validated sales leads directly to your sales team
- Unlike a physical stand you can track the journey of each visitor and understand the content that they most engage with
- This information allows you to understand where they are on their sales journey and follow up with a response tailored to them



Statistics & Visitor CRM

- Track footfall on a daily, weekly, monthly and annual basis
- Track visitors by country
- Visitors can register their interest with specific topics and products
- No limit to the number of visitors who can register to your digital twin or attend live events
- Data stored on secure servers located in the UK





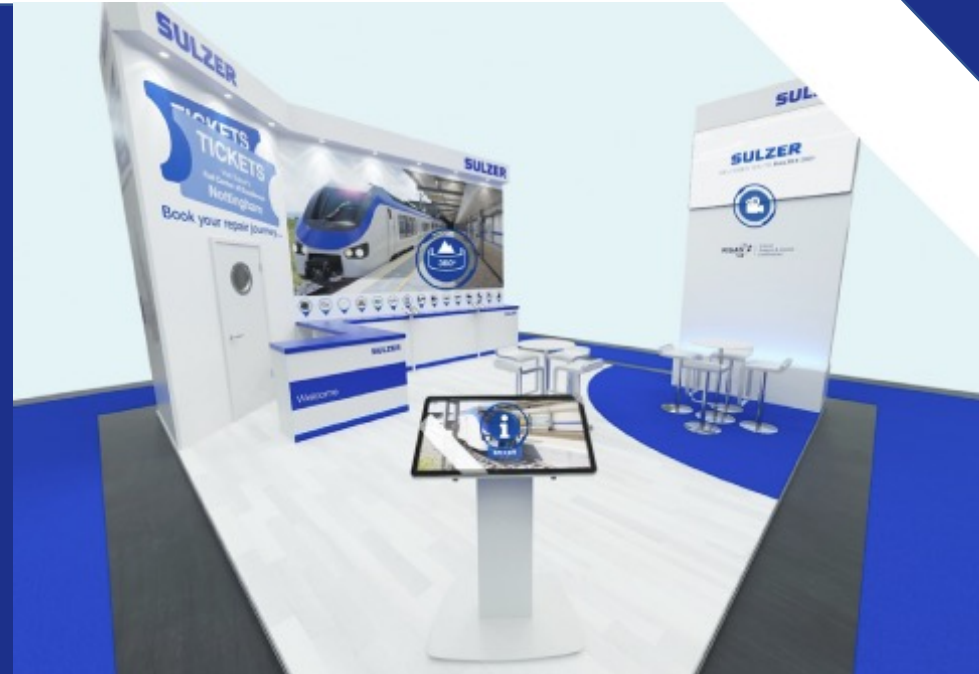
British Encoder products:
24m² exhibition stand first
displayed at Design
Engineering Expo (UK)



Digital Twin:
2.5k individual visits
85 different countries
12 product info points



Sulzer:
36m² exhibition stand first
displayed at Railtex (UK)



Digital Twin:
29.5k individual visits
99 different countries
9 product info points



Panduit:
72m² exhibition stand first
displayed at Eliaden (NO)



Digital Twin:
5.6k individual visits
93 different countries
65 product info points



Colchester Showroom:
510m² product showroom and
headquarters located in
Oxfordshire (UK)



Digital Twin:
1:1 representation of physical venue
4.5k individual visits
30 different countries
14 x photorealistic machine tools



Baumer:
81m² exhibition stand first
displayed at Drives and
Controls exhibition(UK)



Digital Twin:
7.5k individual visits
94 different countries
128 product info points



Sulzer Headquarters:
99.7 m tall skyscraper acts as
the global headquarters for
Sulzer (CH)



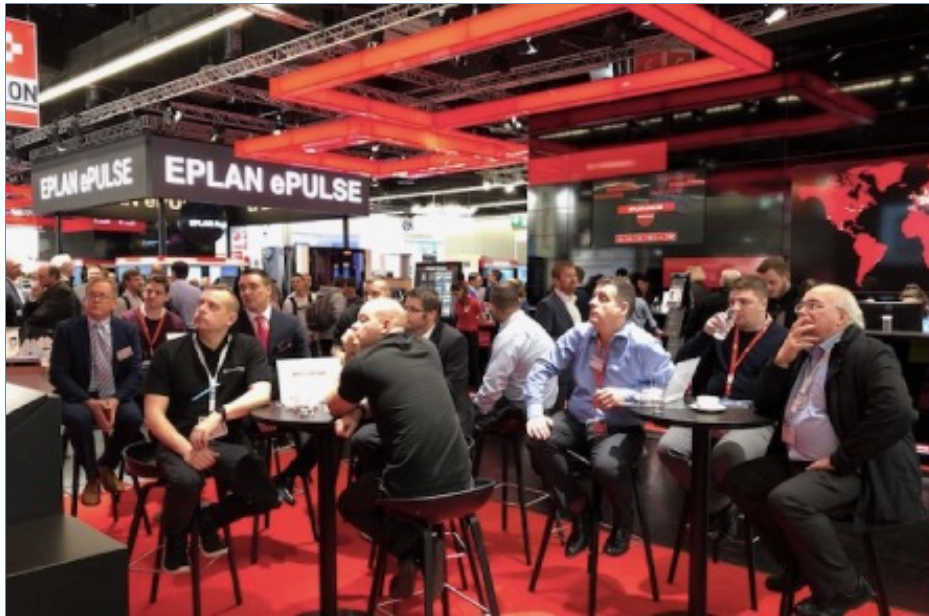
Digital Twin:
Auditorium hosts monthly seminars
Part of Sulzer World VR Project
30 different countries



CLPA:
76.5m² exhibition stand first
displayed at SPS Nuremberg
Fair (DE)



Digital Twin:
5k individual visits
4 languages available
105 product info points



EPLAN:
315m² exhibition stand first
displayed at SPS Drives Fair (DE)



Digital Twin:
18k individual visits
124 different countries
37 product info points



Müller Martini (CH)
3000m² showroom displayed at
Printing Expo Online

One-off design created to use
as a sales and marketing tool.

DIGITAL TWIN:

Interactive 3D environments

Virtual interactive exhibitions, apps and environments represent the future of promotional and educational materials. Through the creation of interconnected platforms, we provide pioneering solutions to showcase products and services.

Wayne Beckett – Sales Director

Call: +44 (0) 7496 616063

Email: wayne@resolvebm.co.uk